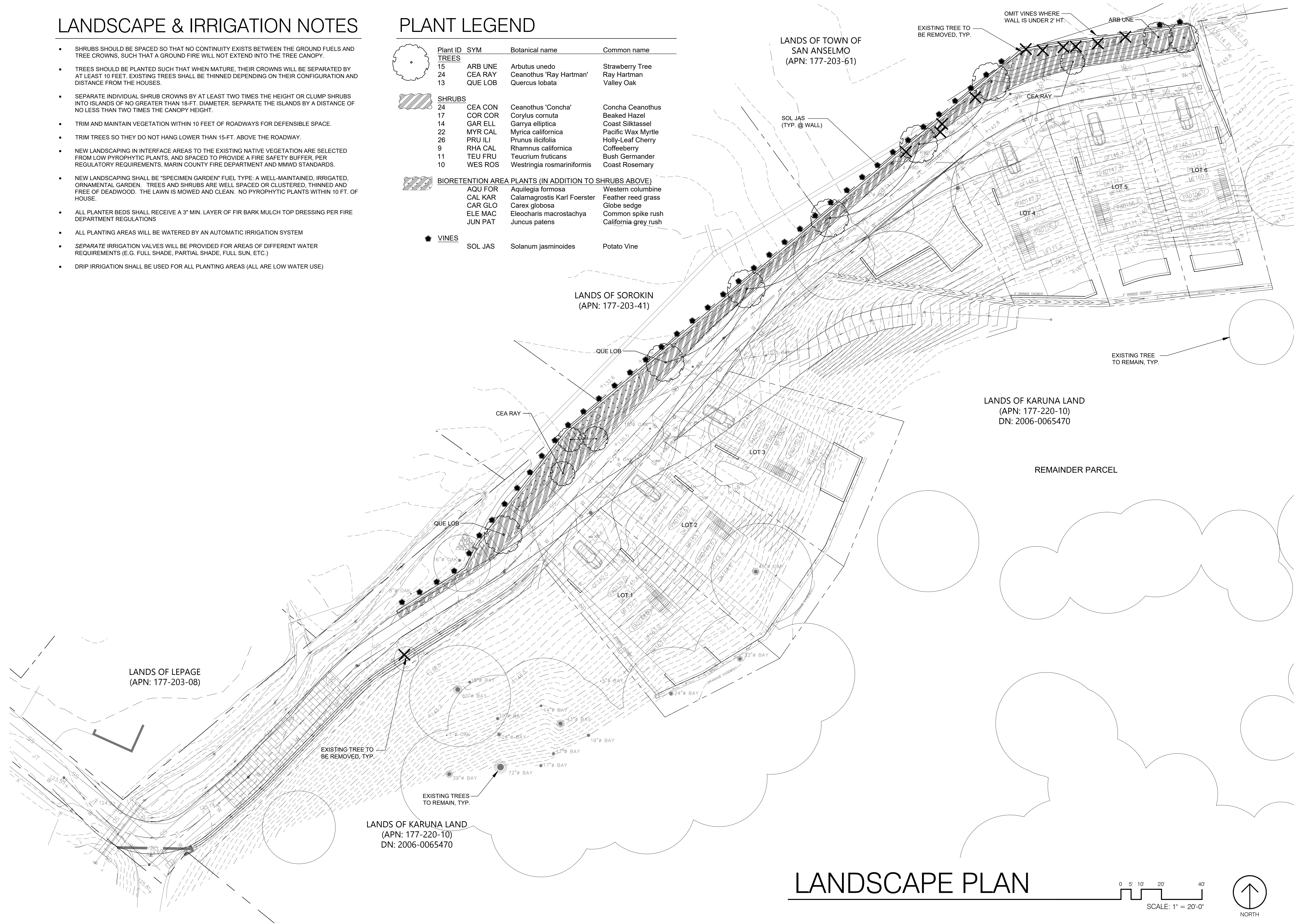


# LANDSCAPE & IRRIGATION NOTES

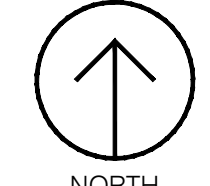
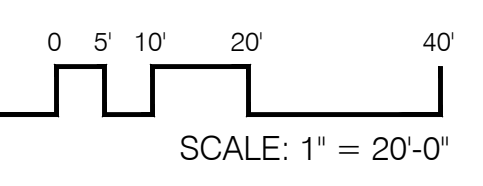
- SHRUBS SHOULD BE SPACED SO THAT NO CONTINUITY EXISTS BETWEEN THE GROUND FUELS AND TREE CROWNS, SUCH THAT A GROUND FIRE WILL NOT EXTEND INTO THE TREE CANOPY.
- TREES SHOULD BE PLANTED SUCH THAT WHEN MATURE, THEIR CROWNS WILL BE SEPARATED BY AT LEAST 10 FEET. EXISTING TREES SHALL BE THINNED DEPENDING ON THEIR CONFIGURATION AND DISTANCE FROM THE HOUSES.
- SEPARATE INDIVIDUAL SHRUB CROWNS BY AT LEAST TWO TIMES THE HEIGHT OR CLUMP SHRUBS INTO ISLANDS OF NO GREATER THAN 18-FT. DIAMETER. SEPARATE THE ISLANDS BY A DISTANCE OF NO LESS THAN TWO TIMES THE CANOPY HEIGHT.
- TRIM AND MAINTAIN VEGETATION WITHIN 10 FEET OF ROADWAYS FOR DEFENSIBLE SPACE.
- TRIM TREES SO THEY DO NOT HANG LOWER THAN 15-FT. ABOVE THE ROADWAY.
- NEW LANDSCAPING IN INTERFACE AREAS TO THE EXISTING NATIVE VEGETATION ARE SELECTED FROM LOW PYROPHYTIC PLANTS, AND SPACED TO PROVIDE A FIRE SAFETY BUFFER, PER REGULATORY REQUIREMENTS, MARIN COUNTY FIRE DEPARTMENT AND MMWD STANDARDS.
- NEW LANDSCAPING SHALL BE "SPECIMEN GARDEN" FUEL TYPE: A WELL-MAINTAINED, IRRIGATED, ORNAMENTAL GARDEN. TREES AND SHRUBS ARE WELL SPACED OR CLUSTERED, THINNED AND FREE OF DEADWOOD. THE LAWN IS MOWED AND CLEAN. NO PYROPHYTIC PLANTS WITHIN 10 FT. OF HOUSE.
- ALL PLANTER BEDS SHALL RECEIVE A 3" MIN. LAYER OF FIR BARK MULCH TOP DRESSING PER FIRE DEPARTMENT REGULATIONS
- ALL PLANTING AREAS WILL BE WATERED BY AN AUTOMATIC IRRIGATION SYSTEM
- SEPARATE IRRIGATION VALVES WILL BE PROVIDED FOR AREAS OF DIFFERENT WATER REQUIREMENTS (E.G. FULL SHADE, PARTIAL SHADE, FULL SUN, ETC.)
- DRIP IRRIGATION SHALL BE USED FOR ALL PLANTING AREAS (ALL ARE LOW WATER USE)

# PLANT LEGEND

Plant ID	SYM	Botanical name	Common name
<b>TREES</b>			
15	ARB UNE	Arbutus unedo	Strawberry Tree
24	CEA RAY	Ceanothus 'Ray Hartman'	Ray Hartman
13	QUE LOB	Quercus lobata	Valley Oak
<b>SHRUBS</b>			
24	CEA CON	Ceanothus 'Concha'	Concha Ceanothus
17	COR COR	Corylus cornuta	Beaked Hazel
14	GAR ELL	Garrya elliptica	Coast Silktassel
22	MYR CAL	Myrica californica	Pacific Wax Myrtle
26	PRU ILI	Prunus ilicifolia	Holly-Leaf Cherry
9	RHA CAL	Rhamnus californica	Coffeeferry
11	TEU FRU	Teucrium fruticans	Bush Germander
10	WES ROS	Westringia rosmariniformis	Coast Rosemary
<b>BIORETENTION AREA PLANTS (IN ADDITION TO SHRUBS ABOVE)</b>			
AQU FOR		Aquilegia formosa	Western columbine
CAL KAR		Calamagrostis Karl Foerster	Feather reed grass
CAR GLO		Carex globosa	Globe sedge
ELE MAC		Eleocharis macrostachya	Common spike rush
JUN PAT		Juncus patens	California grey rush
<b>VINES</b>			
SOL JAS		Solanum jasminoides	Potato Vine



# LANDSCAPE PLAN



Date: May 9, 2018

Revisions:  
June 29, 2018  
Remove Lot 2 wall  
Reverse drain arrows

LANDSCAPE ARCHITECTURE  
USA Mexico City  
3720 E Rockwood Drive Rio Churubusco 601  
Phoenix, AZ 85050 Suite 1716  
415 545 8463 Xoco, CDMX 03330  
+52 55 5131 3875  
CA Lic. #4637 AZ Lic. #59728 NV Lic. #997



KARUNA SUBDIVISION  
1 SACRAMENTO AVENUE  
SAN ANSELMO, CA 94960  
APN 177-220-10

LANDSCAPE PLAN

L1